



# BROCHURE

**NEW FORCE IN HEAVY INDUSTRIES**



**BJC HEAVY INDUSTRIES PUBLIC COMPANY LIMITED**

[www.bjc1994.com](http://www.bjc1994.com)

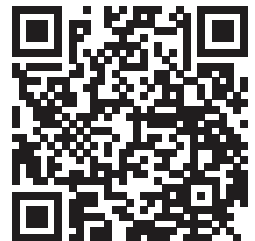


ExxonMobil



**BJC HEAVY INDUSTRIES PUBLIC COMPANY LIMITED**

594 Moo 4, Makhamkhu, Nikompattana, Rayong 21180 Thailand Tel : +66 (0) 33 017 345 - 7



# Welcome to BJCHI

BJC Heavy Industries Public Company Limited



Founded in 1994



Headquarter location  
in Rayong, Thailand



Listed in Stock Exchange  
of Thailand



Registered Capital 400m THB

To be a world-class provider of integrated **Engineering, Procurement, Fabrication, and Modularization services.**

# BJCHI VISION



## VISION

To be a world-class integrated engineering, procurement, fabrication and modularization service provider.



## MISSION

- To create sustainable value for shareholders through our business's sustainable growth.
- To strive to operate business under ESG framework.
- To provide products & services for customers with exceptional quality and on-time delivery.
- To make contribution to societies through our business operation on a sustainable basis.



## BUSINESS STRATEGY

In order to achieve our long-term sustainable growth, BJCHI strongly aims to:

- Deepen and focus on overseas markets;
- Expand products and services to local markets;
- Continue cost saving plan to maintain competitiveness;
- Develop people to enhance their knowledge, skills and abilities
- Comply with international management system standards with continuous improvement

# HISTORY

BJC HEAVY INDUSTRIES PUBLIC COMPANY LIMITED



## 1994



- Founded as BJC Industrial Company Limited, at Maptaphut, Rayong.

- Relocated to Nikompattana, Rayong and expanded capacity.
- Began working with major overseas customers, including ITT S.p.A.



## 2003



- Registered with BOI.
- Certified ASME Stamp Holder - S, U, U2, and R.

## 2009



- Expanded business line to Pre - cast Concrete services.
- Delivered the Air Liquide H2 Plant Project at site in Singapore for site ErectionService.

- Commenced the Tenke Fungurume Mining Project in DR Congo for Large-Scale Site Erection services.



## 2006



**RIO TINTO**

- Commenced the Alcan Gove Calcinator Project in Australia for Fabrication and Modularization work.

## 2008

- Commenced the APLNG Pre - Assembly Unit & Wellhead Separator Projects in Australia due to exceptional products and services widely recognized.

**ORIGIN ENERGY**



## 2013



- Listed on the Stock Exchange of Thailand Established the Galvanizing Shop and the Grating Shop to enhance production efficiency.

## 2011



- Certified ISO 14001:2004 (Environment Mgmt System).
- Certified OHSAS 18001:2007 (Occupational Health and Safety Mgmt System).

## 2012

## 2014



- Included in SET100 and MSCI Global Small Cap Indexes.
- Commenced the Petrobras FPSO P75/P77 Modules Project in Brazil.
- Certified ISO 14001 : 2004 for Galvanizing Shop.
- Received the CSR Award for Excellence in Supporting the Disabled.
- Established the Built-up Beam Shop for fabricating steel products.

## 2019



- Successfully delivered Phase 4B BLWPC and Decks Fabrication and Transportation of Ophir Thailand (Bualuang) Limited.
- Commenced the CRISP' project largely engaging in Steel Fabrication and Modules Construction work in Oil and Petrochemical industry in Singapore.

- Commenced the FPSO Compression Modules Project (01B and 02B) with TUPI (Petrobras & Partners).
- Entered into a service agreement with TUPI (Petrobras & Partners).



## 2015

- Successfully delivered The FPSO Compression Modules ( 03B ) with TUPI BV.
- Commenced the UPGN Comperj of Kerui Método Construção e Montagem S.A in the oil and natural gas industry in Brazil.
- Successfully certified as a member of Thailand's Private Sector Collective Action Coalition Against Corruption (CAC).



## 2018

## 2020

- Successfully delivered UPGN Comperj of Kerui Método Construção e Montagem S.A in the oil and natural gas industry in Brazil.
- Successfully delivered LINDE project in the gas industry in United States.
- Received 2020 Outstanding IR Award from SET Award 2020 in the group of listed companies with market capitalization between 3,000 - 10,000 million baht.



## 2016



**PETROBRAS**

- Commenced the FPSO Compression Modules Project (03B) after successfully delivering The FPSO Compression Modules (01B and 02B) with excellent quality.
- Received ESG100 certificate from Thaipat Institute for its contribution to society, environment under good corporate governance framework.

## 2017



- Received Best IR award for the group of listed companies with market capitalization between 3,000 - 10,000 million baht.
- Entered into Memorandum of Understanding (MOU) with SunSHIFT to execute a solar panel demonstration project in Australia.



- Successfully delivered Koodaideri project relating to steel fabrication and modularization in mining industry, located in Australia
- Successfully delivered OWMAN and MARLIM AZUL M501JAC Modular Package Skid project relating to steel fabrication in power plant industry, located in United States and Brazil
- Received Santos project relating to supply and fabrication of Wellhead Separator in gas industry, located in Australia

## 2021

## 2022-2023



### EXXON MOBIL

- Successfully recommenced CRISP, the large-scale project in petrochemical industry, located in Singapore
- Successfully delivered GENESEE M501JAC Modular Package skid relating to steel fabrication in power plant industry located in Canada
- Continued receiving Santos project relating to supply and fabrication of Wellhead Separator in gas industry located in Australia

- Successfully the delivery of the CRISP (Chemical and Refining Integrated Singapore Plant) Project for ExxonMobil, meeting the highest standards of quality, safety, and on-time delivery. This project is recognized as one of the key industrial undertakings in the Southeast Asian region.

- The Company has once again been selected as part of the ESG100 Universe for 2024 by the Thaipat Institute, reflecting its continued commitment to sustainable business practices encompassing economic, social, and environmental dimensions.



## 2024

## 2025 - PRESENT



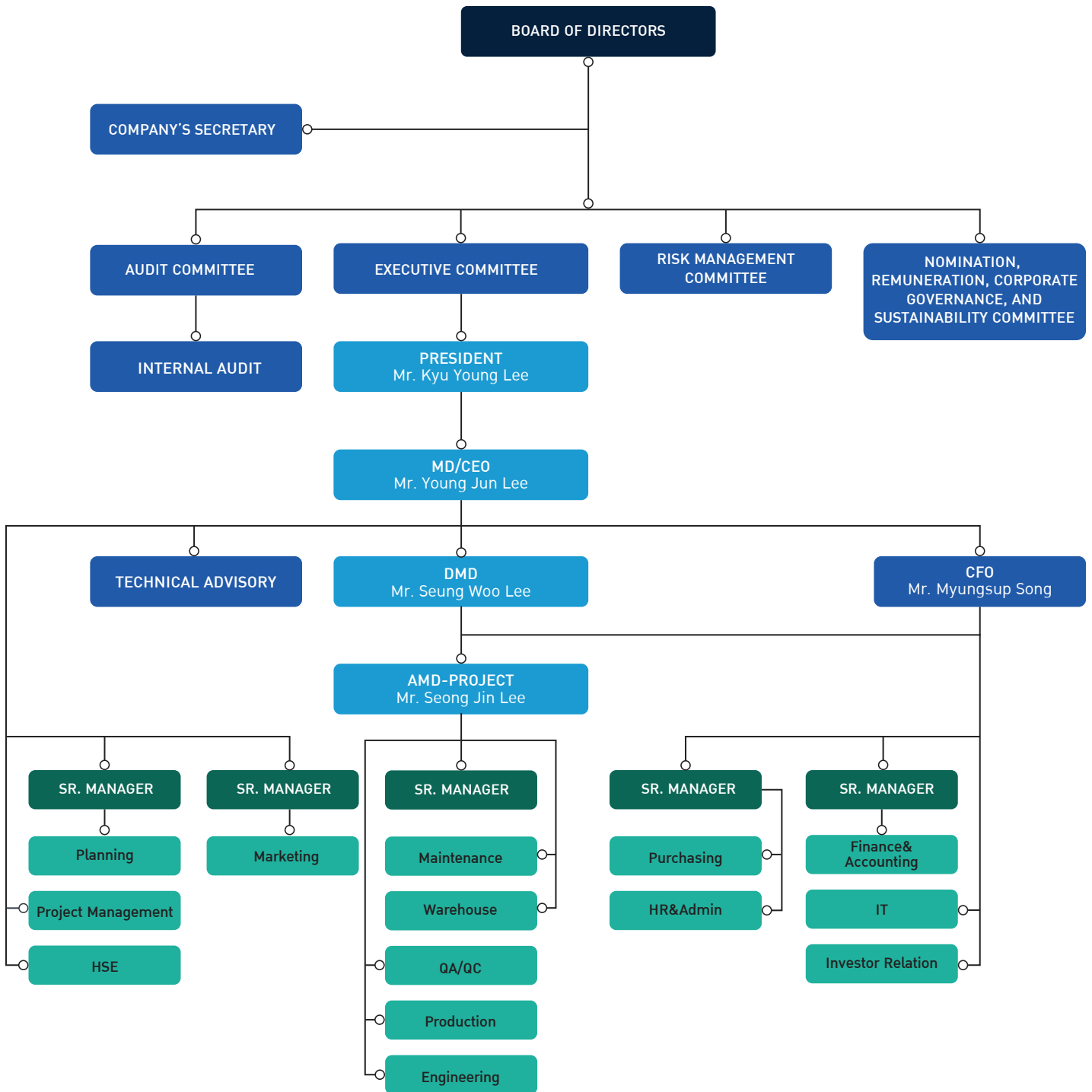
- Successfully completed the delivery of onshore gas wellhead skids for the Santos Cooper Basin Phase 3 Gas Processing Project in Australia, and delivered the Portocem Gas Turbine Casting Project in Brazil for Cimtas.

- Building on long-term partnerships, BJCHI has delivered over 3,000 skids to Australia for Santos and continues to support Cimtas with gas turbine casing fabrication for the global power plant industry.



# COMPANY ORGANIZATION

The Company recognizes the importance of board diversity as an essential factor in enhancing organizational effectiveness and governance. Board diversity includes gender, age, educational background, skills, knowledge, and professional experience. Therefore, in the recruitment and appointment of directors, the Company considers candidates based on their qualifications, expertise, and the benefits that diverse perspectives bring to the organization.



\*Remark : The Internal Audit team of the Company works in cooperation with Dharmniti Internal Audit Co., Ltd., the Internal Auditor.



**BR** PETROBRAS | TUPI PROJECT



**ExxonMobil** | CRISP PROJECT

# NATURE OF BUSINESS

BJC Heavy Industries PCL. (“**THE COMPANY**” OR “**BJCHI**”) engages in steel fabrication business of more than 3 decades. Our products and services are composed of modularization, steel fabrication, piping fabrication & installation and other services, as follows;

## MODULARIZATION

BJCHI has both the expertise and experience in executing large-scale international modularization projects. Modularization work entails putting together steel structures, piping spools, equipment such as compressors, pressure vessels, heat exchangers, and electrical and instrumentation systems into a module as per design specifications. Modularization significantly reduces construction costs, optimizes site manpower resources, and helps overcome site limitations for clients.

It requires more advanced engineering, large shops and land with modularization yards strategically located near the port. BJCHI fabricates steel components in the Company’s manufacturing shops in Nikompattana. The modularization process is carried out at the yards located next to Sattahip Port and Maptaphut Port.





## STEEL STRUCTURE FABRICATION

BJCHI provides steel fabrication services for various types of structural steel components, using structural steel, steel pipes, and steel plates as key raw materials. The work is carried out through cutting, bending, welding, and assembly processes in accordance with customers' drawings and specifications.

Our fabricated steel products are widely used in large-scale industrial plants and buildings, including refineries, petrochemical plants, power plants, and mining facilities.





## PIPING FABRICATION & INSTALLATION WORK

BJCHI provides complete piping fabrication and installation services, including cutting, fit-up, welding, inspection, and site installation for industrial plant projects. Our piping works are performed in accordance with customers' drawings, specifications, and project requirements.





## PRESSURE VESSELS AND PRESSURE PARTS

BJCHI provides fabrication services for pressure vessels, pressure parts, and related components used in industrial production processes. These products are designed to safely contain, process, or transport pressurized liquids and gases, where quality, safety, and compliance with applicable standards are essential.

With experienced personnel, qualified welding procedures, and strict quality control, BJCHI supports customers in delivering reliable pressure equipment for oil & gas, petrochemical, power, and other heavy industrial projects.

# GAS TURBINE ENCLOSURE

BJCHI is capable of fabricating and assembling gas turbine enclosure modules according to client's design and specifications, including structural steel, enclosure panels, piping supports, mechanical fitting, surface treatment, and final inspection.

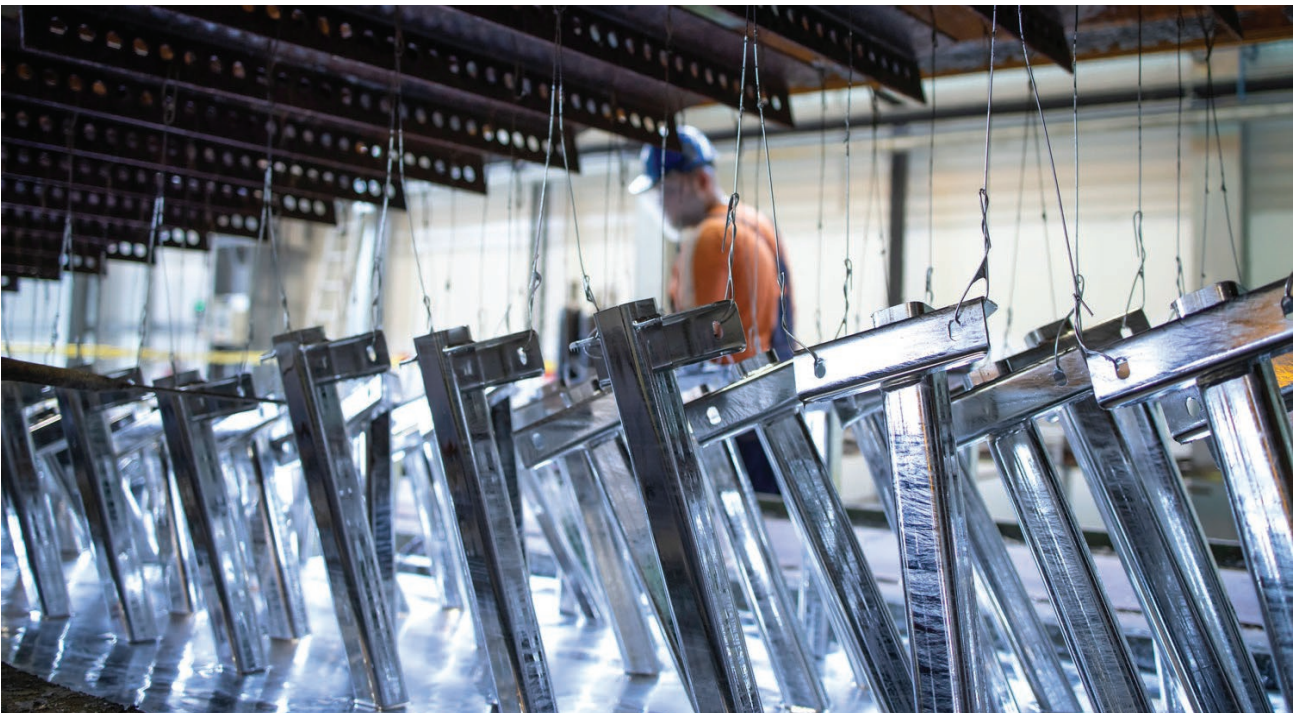
Our experience covers large-scale modular works for power generation projects, with a focus on quality workmanship, dimensional accuracy, safety, and timely delivery.

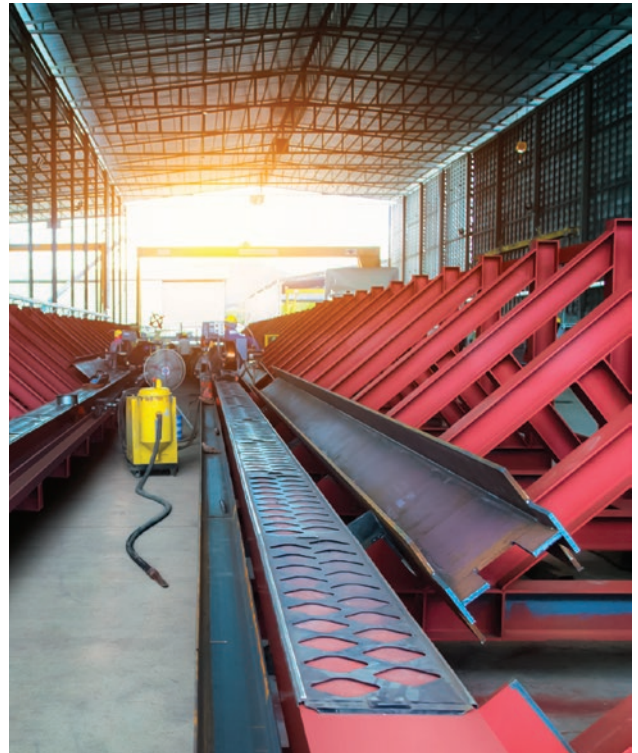


## OTHER SERVICES

To complement its main fabrication and modularization works, BJCHI offers a range of supporting services to meet specific project and customer requirements. These include galvanizing, grating fabrication, post-weld heat treatment, built-up beam fabrication, heater reformer component fabrication, and storage tank fabrication.

While these services are not BJCHI's primary business focus, they provide added value by supporting project execution, improving delivery flexibility, and ensuring quality control for both internal projects and external





- ① Galvanizing
- ② Grating
- ③ PWHT (Post Weld Heat Treatment)

- ④ Built-Up Beam
- ⑤ Heater Reformer
- ⑥ Storage Tank

# INDUSTRIES

## OIL & GAS UPSTREAM







**ophir** | BUALUANG WELLHEAD PLATFORM PROJECT

<b>Santos</b>	SANTOS	GLNG Contract 1-7 (Australia, 2019-Present), 13,926 tons
<b>Santos</b>	SANTOS	Cooper Basin 1-5 (Australia, 2022-Present), 1,935 tons
	LINDE	Convent&Sweeny Project (USA, 2019-2020), 4,460 tons
	PTTLNG	Nong Fab LNG Project (Thailand, 2019-2020), 400 tons
	PETROBRAS	UPGN Comperj Project (Brazil, 2017-2020), 66 skids, 3,500 tons
<b>ophir</b>	OPHIR	Phase 4B BLWPC and Decks Fabrication and Transportation (Thailand, 2018-2019), Wellhead Platform 1,900 tons
	PETROBRAS	TUPI Replicant FPSO Compression Modules Packages III Project (Brazil, 2015-2017), 15,000 tons
	PETROBRAS	FPSO P75/P77 Modules Project (Brazil, 2014-2017), 27,215 tons
	ORIGIN ENERGY	APLNG Upstream Wellhead Separators (Australia, 2012-2015), 1,200 skids.
	CHEVRON	Wheatstone LNG Plant (Australia, 2014), 2,200 tons
	ORIGIN ENERGY	Gas Train Pre-Assembly Units (Australia, 2012-2014), 15 modules.
	PTT	Gas Separator Plant 6 (Thailand, 2009), 1,500 tons

# REFINING & PETROCHEMICAL



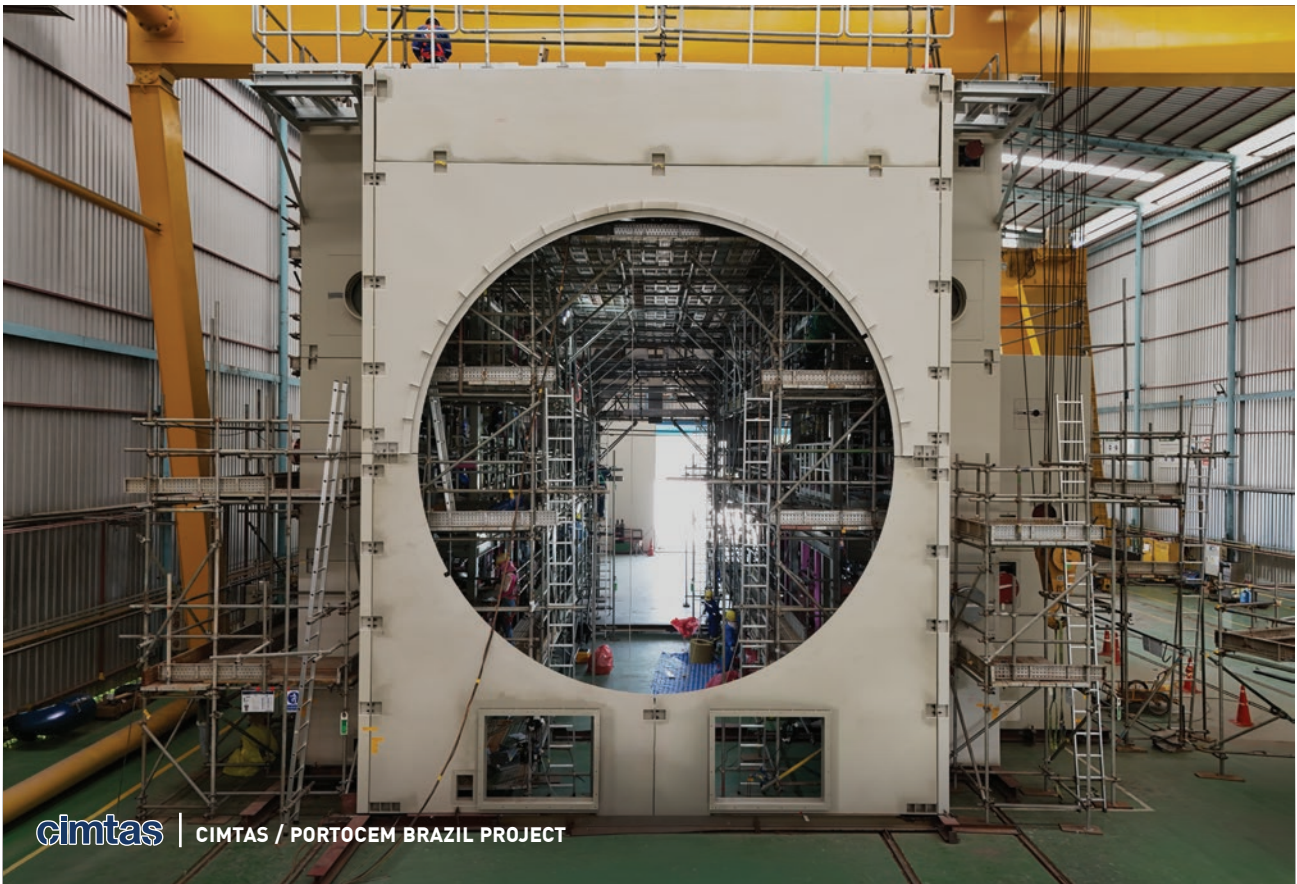
	<b>EXXONMOBIL</b>	CRISP Project (Singapore, 2019-2024), 23,000 tons
	<b>FIRST QUANTUM</b>	Cobre Panama Project (Panama, 2018), 200 tons
	<b>PETROBRAS</b>	UFN Fertilizer Plant (Brazil, 2015), 3,000 tons
	<b>PTT</b>	Thai Linear Alkylbenzene Project (Thailand, 2014), 700 tons
	<b>HYUNDAI</b>	UTE Punta del Tigre CCPP Project (Uruguay, 2014), 600 tons
	<b>AIR LIQUIDE</b>	Hermes H2 Plant (Singapore, 2009), 2,400 tons
	<b>ITT</b>	Abadan & Procon Projects (Iran, 2009), 1,200 tons
	<b>RIO TINTO</b>	Alcan Gove Alumina Refinery (Australia, 2005-2006), 11,000 tons

# MINING



<b>RioTinto</b>	<b>RIO TINTO</b>	Koodaideri Project (Australia, 2020-2021) 7,300 tons
<b>BHP</b>	<b>BHP</b>	Spence Growth Project (Chile, 2018), 1,500 tons
	<b>ROY HILL IRON</b>	Ore Project (Australia, 2014-2015), 7,000 tons
<b>RioTinto</b>	<b>RIO TINTO</b>	Cape Lambert Port B (Australia, 2012-2014), 12,000 tons
<b>KARARA</b> <small>MINING LTD</small>	<b>KARARA MINING</b>	Geraldton Port Berth 7 (Australia, 2011-2012), 2,300 tons
	<b>FMG</b>	Solomon Mining Project (Australia, 2011), 1,400 tons
<b>BHP</b>	<b>BHP</b>	Rapid Growth 5 Project (Australia, 2009-2010), 4,400 tons
	<b>FREEMPORT-MCMORAN</b>	Tenke Fungurume Mining (Congo, 2008), 1200 tons

## POWER & OTHERS



<b>cimtas</b>	<b>CIMTAS / MITSUBISHI HEAVY INDUSTRIES</b>	Portocem Project (Brazil, 2024-2025) 880 tons
<b>cimtas</b>	<b>CIMTAS / MITSUBISHI HEAVY INDUSTRIES</b>	Napanee/Atura Project (Canada, 2025-2025) 305 tons
<b>cimtas</b>	<b>CIMTAS / MITSUBISHI HEAVY INDUSTRIES</b>	Bundle Packages (USA, 2025-Present) 2,127 tons
<b>ARKE</b>	<b>ARKE ENERGIA</b>	Lowman and Marlim Azul Project (United States and Brazil, 2020-2021) 484 tons
	<b>QAFCO</b>	QAFCO Rapo Power Plant (Qatar, 2009), 460 tons
	<b>CENTRAL PUERTO</b>	Argentina Co-generation Plant (Argentina, 2007), 460 tons
	<b>MITSUBISHI HEAVY INDUSTRIES</b>	Su Tu Wang Offshore Project (Vietnam, 2007), 400 tons
	<b>SAMSUNG ENGINEERING</b>	Zawitina CCGP (Libya, 2006), 350 tons
	<b>MITSUBISHI HEAVY INDUSTRIES</b>	BLCP Power Plant (Thailand, 2005), 400 tons
	<b>HANJUNG AUSTRIAN ENERGY FORTUM FINLAND ENGINEERING LTD.</b>	Laemchabang Cogeneration Power Plant(Thailand, 2001), 1,100 tons & 3 turbines
<b>BHP</b>	<b>BHP</b>	SunShift Solar Panel Demonstration Project (Australia, 2017), 300 tons

# INTERNATIONAL CERTIFICATIONS

BJCHI has certificates from well-known international institutions which are a testament to the Company's commitment and capabilities to deliver products and services of the highest quality.

## ISO AND OHSAS CERTIFICATES ACCREDITED BY TÜV NORD

- ISO 9001:2015 (Quality Management System)
- ISO 14001:2015 (Environmental Management System)
- ISO 45001:2018 (Occupational Health and Safety Management System)



## CERTIFICATES FROM AMERICAN SOCIETY OF MECHANICAL ENGINEERS (ASME)

- Standards for “S”, “U” and “U2” (boiler and pressure vessel)





## OUR TRACK RECORD BUILT ON DECADES OF EXPERIENCE

In executing large-scale international projects is a testament to our unwavering Commitment to provide exceptional quality, deliver on-time and exceed customer Expectations. We have successfully completed projects globally



ADDRESS

594 Moo 4, Makhamkhu Sub-district  
Nikompattana District  
Rayong 21180, Thailand



PHONE

☎ Telephone : +66 (0) 33 017 345  
☎ Facsimile : +66 (0) 33 017 348



WEBSITE

[www.bjc1994.com](http://www.bjc1994.com)